



# DuraGrille™

## Rolling Grille Doors

When security and visibility are primary considerations, choose our attractive rolling DuraGrille security grille. The grille pattern, available in straight or brick, offers an unobstructed view of displays and merchandise. DuraGrille security grilles offer protection against theft and vandalism, all with a contemporary look. DuraGrille security grills are ideal for store fronts and interior applications, such as concessions, cafeterias and retail shops.



### Security

Raynor grille doors are constructed from strong, light weight aluminum. DuraGrille doors also provide reliable protection against theft, vandalism and break-ins.



### Visibility

A wide open viewing area provides customer appeal while allowing visual access of separated spaces.



### Aesthetics

With multiple configurations and a variety of aluminum finishes to choose from, DuraGrille provides the visual aesthetics that are demanded in many high traffic area applications.

## DuraGrille™

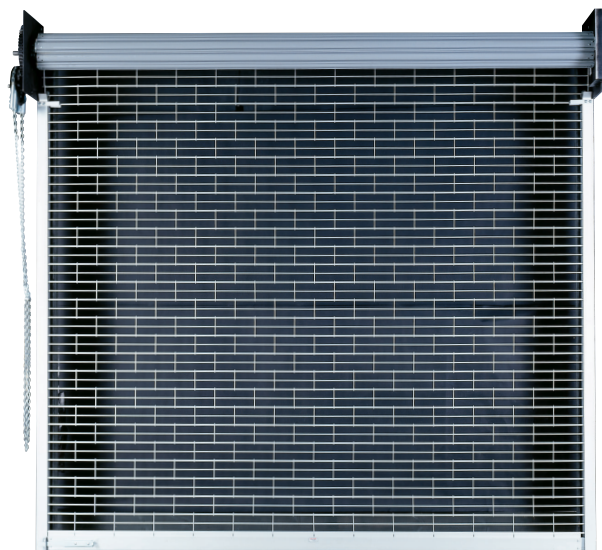


DuraGrille Straight Pattern

### Application Guide

	DuraGrille
Cafeteria/Concessions	●
High Security	◐
Shopping Mall/Retail	●
Underground Parking	◐

● Best    ◐ Good



DuraGrille Brick Pattern

### DuraGrille Standard Features

Every DuraGrille security grille is built for superior performance and includes the features listed below.

#### Grille



Offered in a contemporary brick pattern or traditional straight pattern (left), grilles are constructed of 5/16" mill-finished aluminum rods with 9" center-to-center interlocking links.

#### Aluminum Guides



Extruded aluminum guides are lined with a replaceable wool pile strip to reduce wear and provide quiet operation.

#### Counterbalance System



A torsion-spring-operated system, enclosed in a structural steel barrel, effectively counterbalances the security grille for a minimum of 15,000 cycles. Higher cycle torsion springs are also available.

#### Bottom Bar



An extruded aluminum bottom bar reinforces the curtain and provides smooth operation.

#### Locks



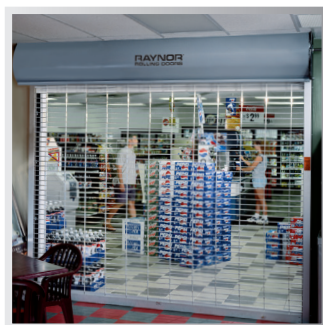
Manually-operated grilles are provided with slide-bolt locks. Other locking options are available.

## Model Options and Upgrades



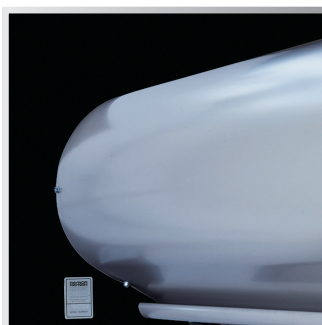
### Increased Security

6" center-to-center link spacing provides added protection.



### Anodized Finishes

Upgrade to a bronze or clear-anodized finish for a brighter appearance and increased durability.



### Curtain Hood

Optional curtain hood has rolled edges and is formed from 24-gauge, hot-dipped galvanized steel, or aluminum.



### Head Plate Cover

Head plate covers are offered for an attractive, finished appearance and help to protect your investment by keeping out dust and grime.

Model	Patterns	Material	Grille Construction	Color/Finish	Guides	Maximum Sizes	Optional Hood
GSA	Straight	Aluminum	5/16" Aluminum rods with Interlocking Aluminum Links	Mill, Clear Anodized, Bronze Anodized	Aluminum	35' Width 24' Height	Steel or Aluminum
GBA	Brick						

NOTE: Contact factory for special sizes.

LIMITED WARRANTY: DuraGrille security grille doors carry a 1-year limited warranty. See your local Raynor Dealer for complete details.

## Operation

### ControlHoist™ 2.0 Operators



Raynor offers a full line of rugged ControlHoist 2.0 operators for jackshaft operation.

### Crank Operation



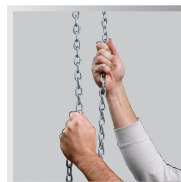
Hand-crank operation is available on all DuraGrille security grilles.

### Control Options



A variety of control stations and remote-activation devices are available.

### Chain Operation



DuraGrille security grilles may also be hand-operated by chain.

### Motor Cover



Motor covers are helpful for noise reduction and provide an attractive look.



## Commercial Operators

Raynor ControlHoist™ 2.0 (with solid state logic board control) operators are available in a variety of motor, voltage, and phase combinations for any commercial or industrial application. Contact your local Raynor Authorized Dealer to select the operator and accessories that are suited for your door's size and usage.



ControlHoist™ 2.0



3 Button Transmitter

## Raynor Door Options

Raynor also offers a full line of sectional, rolling, fire, high performance and traffic doors, as well as, security grilles. See your Raynor Dealer or visit [www.raynor.com](http://www.raynor.com) for more information.



TC Series™, TC300



RapidCoil™, RC300



DuraShutter™

# Professional Installation and Service

## Depend on your Raynor Dealer

When you select Raynor, you're not just getting a superior garage door - you're also getting professional garage door installation and service expertise.

Every Raynor garage door is installed by a trained Raynor professional, and that means added benefits for you. First, you won't have to deal with it yourself. Second, because it's done right the first time, your door will deliver performance and reliability from the day it's installed. Your technician will check your door for everything from safety to performance and appearance. Trust your Raynor garage door to someone who knows it better than anyone else, your professional Raynor Dealer.



P.O. Box 448, 1101 East River Rd.  
Dixon, IL 61021-0448  
1-800-4-RAYNOR (472-9667)

Exclusively Distributed by: